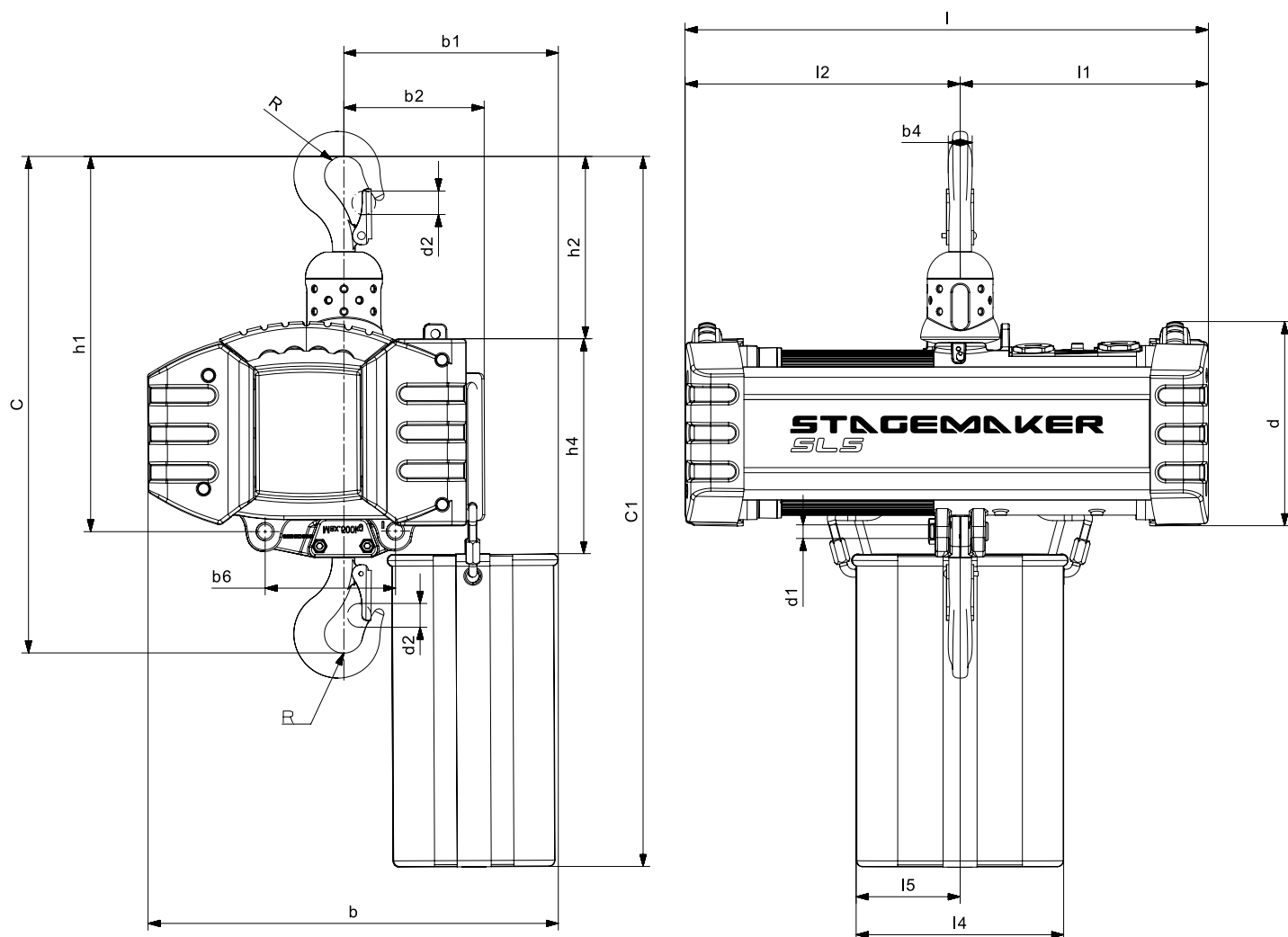


Configuration palan grimpeur Climbing hoist configuration



Chain hoist size	Motor	C	C1		b		b1		b2	l		l2	l1	
			Chain collector box size		Chain collector box size		Chain collector box size			Single brake	Double brake+GLS		Single brake	Double brake+GLS
			H20	H40/H50	H20	H40	H20	H40						
SL05	MT08NB200	438	626	755	362		189		124	462	519	243	219	276

l4		i5										
Chain collector box size												
H20	H40	H20	H40									
182	212	91	106	21	115	180	12	21	17	331	161	190